



## Waldorf Door Handle on Plate

WAL6510-SB

Heritage Brass Door Handle Lever Latch Waldorf Design Satin Brass finish

**Material:**  
Solid Brass

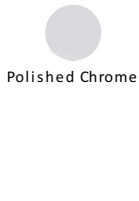
**Finish:**  
Satin Brass

**Warranty:**  
10 Year Mechanism

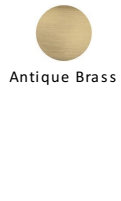
### Available Finishes



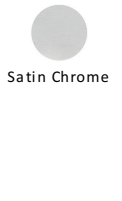
Polished Brass



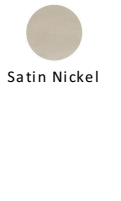
Polished Chrome



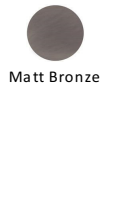
Antique Brass



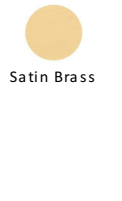
Satin Chrome



Satin Nickel



Matt Bronze



Satin Brass

### Available Functions



**Lever Latch**  
WAL6510-SB



**Lever Lock**  
WAL6500-SB



**Bathroom Set**  
WAL6530-SB



**Euro Profile**  
WAL6548-SB

### Product Dimensions (All dimensions are in millimeters unless otherwise indicated)

<b>Backplate Length</b>	203	<b>Backplate Width</b>	66	<b>Backplate Projection</b>	11	<b>Lever Length</b>	128
<b>Projection</b>	49						

### About the Finish

#### Satin Brass

A modern alternative to the traditional polished brass, this attractive brushed texture beautifully mellows and adds warmth to both a traditional and a soft contemporary décor.

### Useful Information

- Lever Handle for internal doors where locking is not required
- If you are replacing an existing Lever Handle, this Handle will work with a Standard UK Tubular Latch
- For new doors you will also need to purchase a Tubular Latch in a size to suit your door
- For a 2 1/2" Tubular Latch purchase a YKTL2N-SB or for a 3" Tubular Latch a YKTL3N-SB

### Box Contains

- 1 pair of Door Handles
- 1 x spindle
- All fixing screws and fasteners

### With this product you will also need



**Tubular Latches**  
YKTL2N-SB



**Tubular Latches**  
YKTL3N-SB