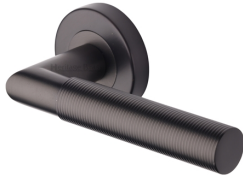


Bauhaus Mitre Reeded Door Handle on Round Rose

V2274-MB

Heritage Brass Door Handle Lever Latch on Round Rose Bauhaus Mitre Reeded Design Matt Bronze finish



Material:
Solid Brass

Finish:
Matt Bronze

Available Finishes



Product Dimensions (All dimensions are in millimeters unless otherwise indicated)

Backplate Projection 11 **Lever Length** 123 **Projection** 62 **Maximum Diameter** 53

About the Finish

Matt Bronze

An aged finish on brass creating a vintage appearance, yet one that also looks outstanding in contemporary schemes. Over a period of time the bronze colour will lighten along any edges and surfaces that are frequently touched and create a naturally aged appearance highlighting frequently touched areas and exposing the brass below.

Useful Information

- Lever Handle for internal doors where locking is not required
- If you are replacing an existing Lever Handle, this Handle will work with a Standard UK Tubular Latch
- For new doors you will also need to purchase a Tubular Latch in a size to suit your door
- For a 2 1/2" Tubular Latch purchase a YKTL2N-MB or for a 3" Tubular Latch a YKTL3N-MB
- Where Privacy is required please use a separate Thumb Turn and Release (eg. reference V4035-MB) with a Bathroom Lock (Reference YKBL2N-MB, or YKBL3N-MB)

Box Contains

- 1 pair of Door Handles
- 1 x spindle
- All fixing screws and fasteners

With this product you will also need

