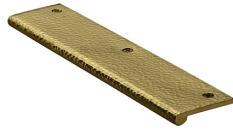


## Edge Pull Cabinet Handle Hammered Design - 38mm Width

HAMEP200 38-PB



Heritage Brass Hammered EP Edge Pull Cabinet Handle 200mm Polished Brass finish

**Material:**  
Solid Brass

**Finish:**  
Polished Brass

### Available Finishes



Polished Brass



Polished Chrome



Antique Brass



Satin Nickel



Matt Bronze



Satin Brass

### Available Sizes



50 mm



100 mm



200 mm

### Product Dimensions (All dimensions are in millimeters unless otherwise indicated)

<b>Length</b>	200	<b>Width</b>	38	<b>Height</b>	3
---------------	-----	--------------	----	---------------	---

### About the Finish

#### Polished Brass

Warm, mellow with a sense of heritage and comfort this highly polished finish is opulent without being flamboyant. Polished Brass coordinates perfectly with traditional décor.

### Useful Information

- The EP range is top fixing, please allow for a 3.5mm gap between drawers, or cut a 3mm recess for flush fitting.

### Box Contains

- 1 x Cabinet Pull
- All fixing screws and fasteners

+44 (0)1384 247805

[www.doorhardware.co.uk](http://www.doorhardware.co.uk)

[info@doorhardware.co.uk](mailto:info@doorhardware.co.uk)