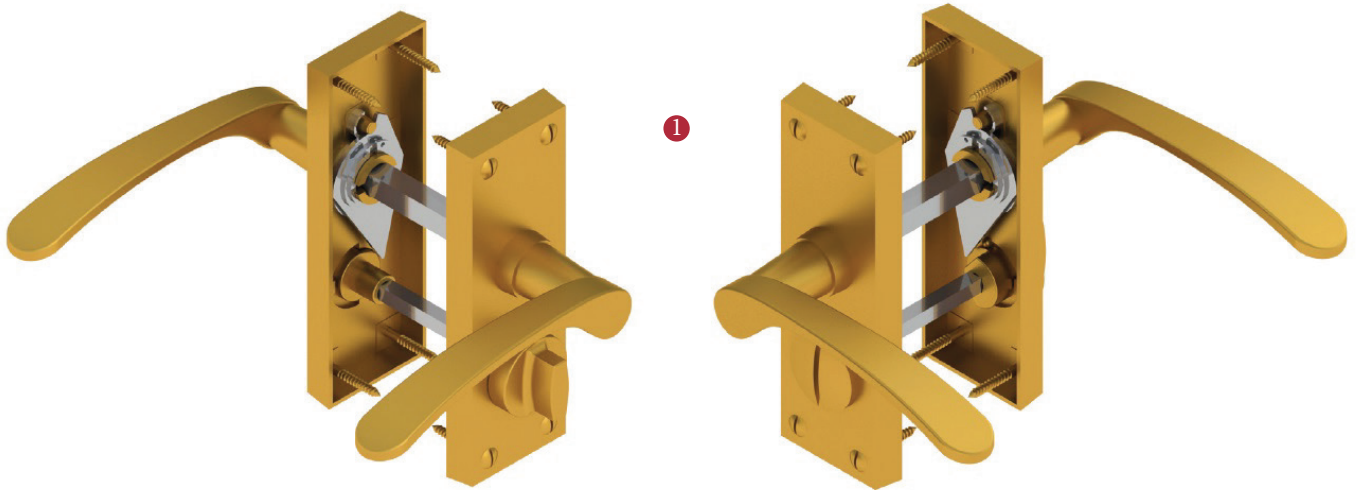
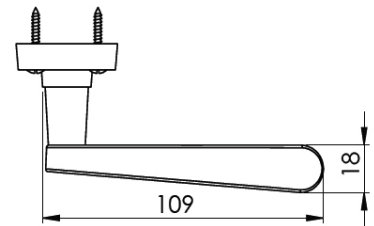
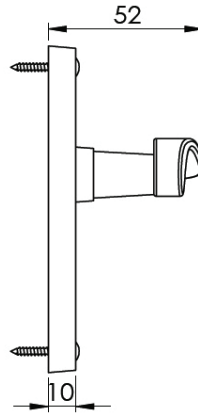
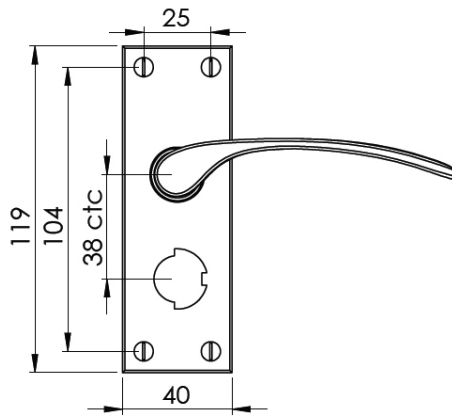


SOPHIA SHORT PRIVACY SET

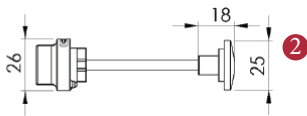


**INSIDE VIEW**  
With thumbturn.

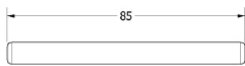
**OUTSIDE VIEW**  
With slotted release.  
Used to open door in emergency.



This latch handle is suitable for use with most U.K. tubular latches.  
For a new door installation we would recommend using our York standard tubular latch from the list below.



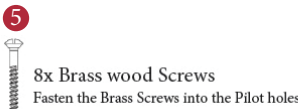
Thumbturn x 1pc.



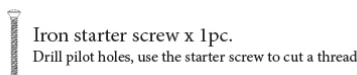
Spindle : 7.8mm x 85mm - 1pc.



2 mm Allen key :  
Used to fasten thumbturn



8x Brass wood Screws  
Fasten the Brass Screws into the Pilot holes



Iron starter screw x 1pc.  
Drill pilot holes, use the starter screw to cut a thread

**TUBULAR LATCH**

(not Included, must be ordered separately)

|             |  |
|-------------|--|
| YKTL2-AT    | 2 1/2" Antique Finish                  |
| YKTL2-BLK   | 2 1/2" Black Finish                    |
| YKTL2-MB    | 2 1/2" Matt Bronze Finish              |
| YKTL2-PB    | 2 1/2" Brass Finish                    |
| YKTL2-PC&PN | 2 1/2" Polished Chrome & Nickel Finish |
| YKTL2-SB    | 2 1/2" Satin Brass Finish              |
| YKTL2-SN&SC | 2 1/2" Satin Nickel & Chrome Finish    |
| YKTL3-AT    | 3" Antique Finish                      |
| YKTL3-BLK   | 3" Black Finish                        |
| YKTL3-MB    | 3" Matt Bronze Finish                  |
| YKTL3-PB    | 3" Brass Finish                        |
| YKTL3-PC&PN | 3" Polished Chrome & Nickel Finish     |
| YKTL3-SB    | 3" Satin Brass Finish                  |
| YKTL3-SN&SC | 3" Satin Nickel & Chrome Finish        |

**Box Contains**

|                       |                        |   |              |                                       |
|-----------------------|------------------------|---|--------------|---------------------------------------|
| ①                     | ②                      | ③   | ④            | ⑤                                     |
| Pair of lever handles | 1x Thumbturn & release | 1x 85mm spindle suitable for 35mm & 45mm thick door | 1x Allen key | 8x Brass wood screws<br>1x Iron screw |

**M Marcus Ltd., Dudley**

Product Code

V4144

Material

Solid Brass

Available in all Heritage Brass finishes.

Sizes shown are in mm and approximate.  
We reserve the right to amend where necessary and without any prior notice.