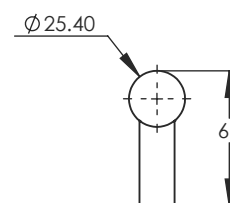
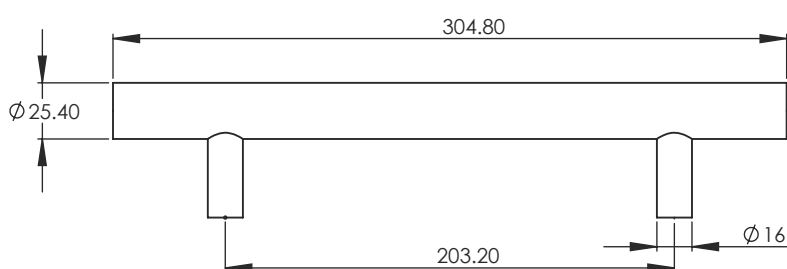


V1361 305 ~ 12" BAR PULL



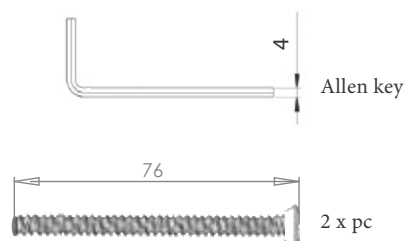
2

1



2 Dimensions:
see the outlines given above

3



FINISHES

- ME Matt Bronze finish
- SE Satin Brass finish
- PN Polished Nickel finish
- SN Satin Nickel finish
- AT Antique Brass finish
- SC Satin Chrome finish
- PE Polished Brass finish
- PC Polished Chrome finish

Overview

1 Bar Pull
illustrated

2 (General
dimensions of
Bar Pull)

3 Supplied with:
2 x 76mm fixing screws
1 x 4mm Allen key


M Marcus Ltd., Dudley

Product Code

V1361 305

Material

Solid Brass

Sizes shown are in mm and approximate.
We reserve the right to amend where
necessary and without any prior notice.