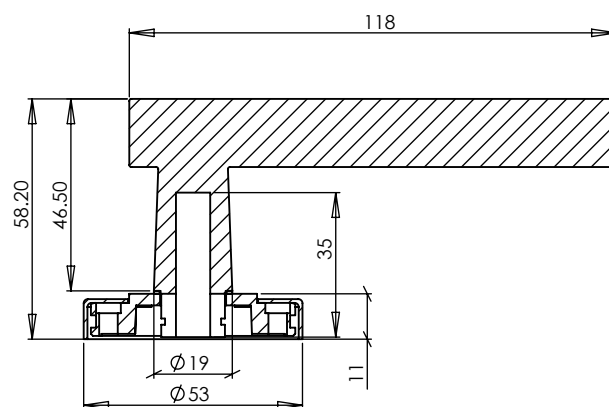
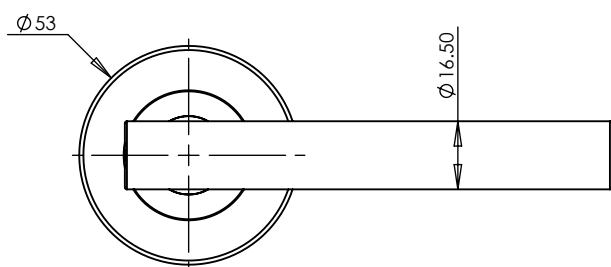


LEVER ON ROSE



1

LEVER VIEW



This latch handle is suitable for use with most U.K. tubular latches.

2



Spindle : 7.8mm x 85mm

3



2x Machine screws for 35mm door
2x Machine screws for 44mm door

For a secure bolt through fixing

4



Steel wood screws
To eliminate rose rotation

FINISHES



Satin Chrome Finish



Polished Chrome Finish



Matt Black finish

Box
Contains

1

Lever
handles

2

1x spindle suitable
for 35mm &
44 mm thick door

3

4x Machine screws

4

8x Steel
wood screws


M Marcus Ltd., Dudley

Product Code

Description

Material

Sizes shown are in mm and approximate.
We reserve the right to amend where
necessary and without any prior notice.

SC-3052

Shuttle lever on rose

Zinc Alloy