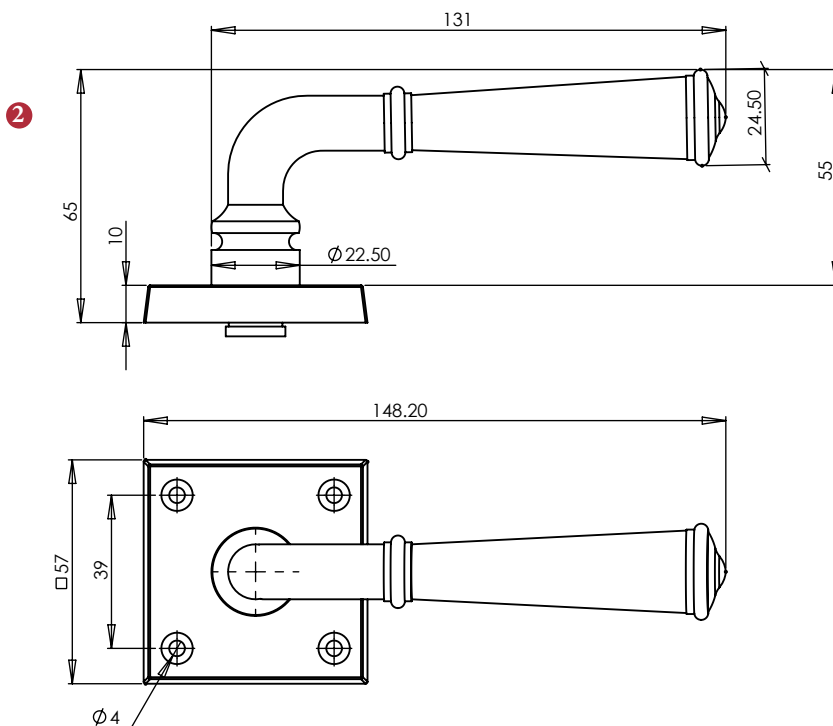



Solid Bronze Rustic


DOOR & CABINET HARDWARE

RDB1933 CLAVERLEY DESIGN LEVER



2 Dimensions:
see the outlines given above

3  Steel starter screw x 1pc
Drill pilot holes, use the starter screw to cut a thread

 Brass wood screws x 4pc
Fasten the wood screws into the pilot holes

Box Contains	① Lever illustrated	② General dimension of Lever	③ Supplied with: 1x Steel starter screw 4 x Brass wood screws	
-----------------	------------------------	------------------------------------	------------------------------------------------------------------------	--


M Marcus Ltd., Dudley

Product Code	Material	Description	Sizes shown are in mm and approximate. We reserve the right to amend where necessary and without any prior notice.
RDB1933	Solid Bronze	Claverley Design Lever in Rustic Dark Bronze finish	