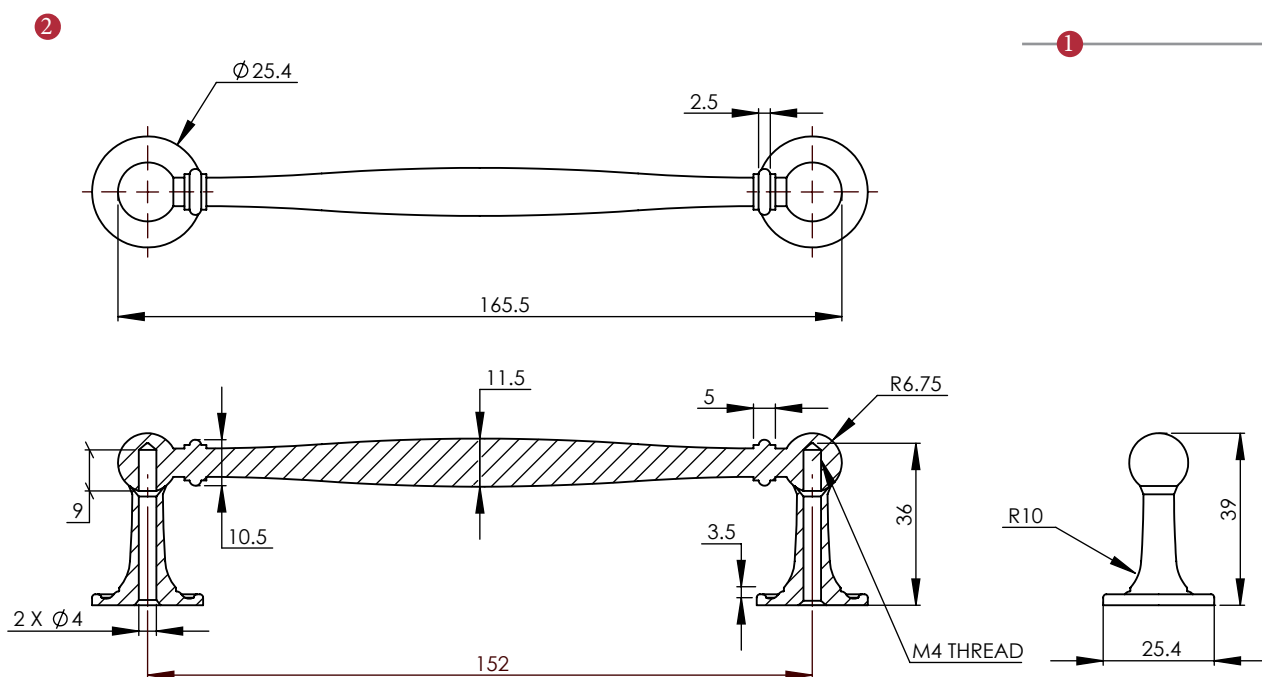
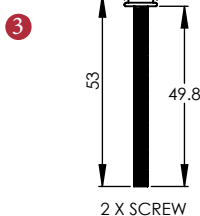


C2533 152 COLONIAL CABINET PULL HANDLE



② Dimensions:  
see the outlines given above



FINISHES

- ME Matt Bronze finish
- SE Satin Brass finish
- PN Polished Nickel finish
- SN Satin Nickel finish
- AT Antique Brass finish
- SR Satin Rose Gold finish
- SC Satin Chrome finish
- PE Polished Brass finish
- PC Polished Chrome finish

Overview

① Cabinet Pull  
illustrated

② General Dimension  
of Cabinet Pull

③ Supplied with:  
2x 50mm machine screw

M Marcus Ltd., Dudley

Product Code

C2533 152

Material

Solid Brass

Sizes shown are in mm and approximate.  
We reserve the right to amend where  
necessary and without any prior notice.