



Windsor Door Handle on Plate

V713-SN

Heritage Brass Door Handle Lever Latch Windsor Design Satin Nickel finish

Material:
Solid Brass

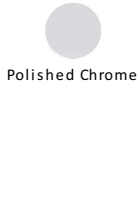
Finish:
Satin Nickel

Warranty:
10 Year Mechanism

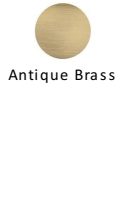
Available Finishes



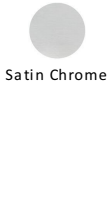
Polished Brass



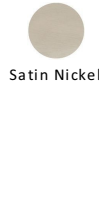
Polished Chrome



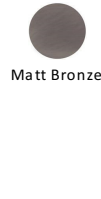
Antique Brass



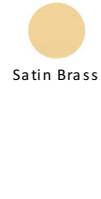
Satin Chrome



Satin Nickel



Matt Bronze



Satin Brass

Available Functions



Lever Latch
V713-SN



Lever Lock
V700-SN



Bathroom Set
V730-SN



Euro Profile
V727.48-SN



Oval Profile
V725-SN

Product Dimensions (All dimensions are in millimeters unless otherwise indicated)

Backplate Length	155	Backplate Width	40	Backplate Projection	10	Lever Length	102
Projection	52						

About the Finish

Satin Nickel

With its honeyed grey tone created by brushed nickel plating on brass, this finish closely matches Stainless Steel but offers a warm and subtle alternative which is popular in traditional and modern décors.

Useful Information

- Lever Handle for internal doors where locking is not required
- If you are replacing an existing Lever Handle, this Handle will work with a Standard UK Tubular Latch
- For new doors you will also need to purchase a Tubular Latch in a size to suit your door
- For a 2 1/2" Tubular Latch purchase a YKTL2N-SN&SC or for a 3" Tubular Latch a YKTL3N-SN&SC

Box Contains

- 1 pair of Door Handles
- 1 x spindle
- All fixing screws and fasteners

With this product you will also need



Tubular Latches
YKTL2N-SN&SC



Tubular Latches
YKTL3N-SN&SC